

I hereby certify that this document and the data contained herein was prepared by me or under my direct supervision.

Timothy M. Haugen

Timothy M. Haugen
Licensed Land Surveyor
Minn. License No. 42298

8/21/2013
Date

AUG 26 2013

RECEIVED

James V. Johnson

MURRAY COUNTY COORDINATE SYSTEM
NAD 83 (2007 Adj.)

Northing: 144949.57
Easting: 548523.57

(reserved for recording data.)

CERTIFICATE OF LOCATION OF GOVERNMENT CORNER

West Quarter Corner of Section 19, Township 106 North, Range 39 West, 5th P.M.
STATE OF MINNESOTA, COUNTY OF MURRAY

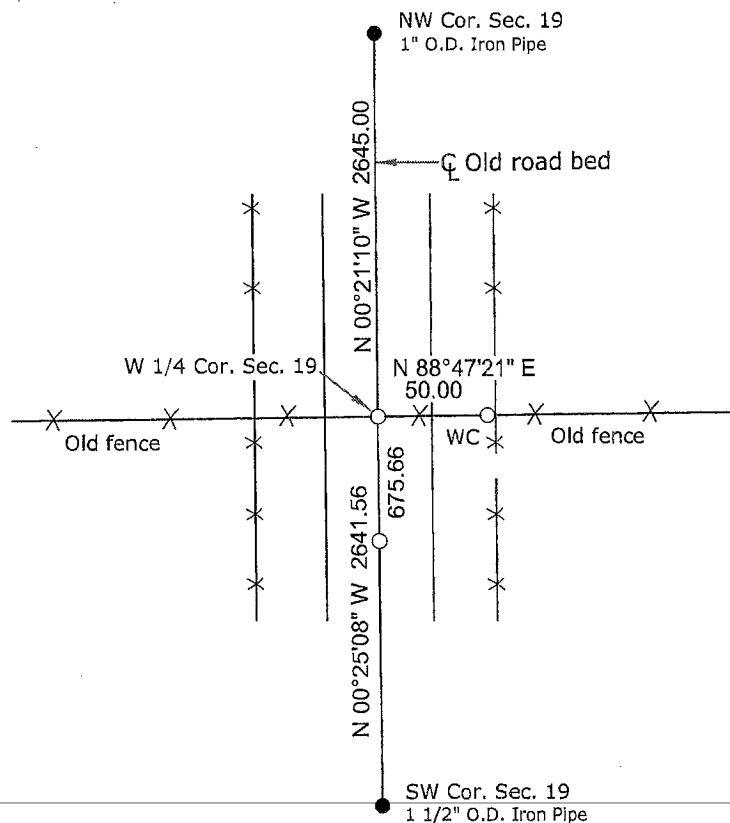
At the corner location shown on the sketch :

On _____, found a _____

left monument as found lowered monument removed monument (explain)

On December 14, 2011, placed a 7/8" O.D. Iron Pipe with 2" Alum. Cap marked "US Fish & Wildlife Service LS 42298" flush

SKETCH OF REFERENCE TIES



NOT TO SCALE
Murray County
Coordinate System
NAD 83 (2007 Adj.)

Statement of evidence relative to this corner location is on back page

West Quarter Corner of Section 19, Township 106 North, Range 39 West, 5th P.M.

1861 Original U.S. General Land Office survey was conducted by J.W. Myers, who set a charred wood post for this corner, made mound of earth & sod with trench & pits as per instructions.

1894 A Supervisors Road Order was filed at the County Auditor's office. It indicates the centerline of a road to be laid out and established runs on the town line between the towns of Lime Lake and Des Moines River.

1964. Field notes from a survey completed by the Minnesota Conservation Department (MN DNR) indicate this corner assumed at the P.I. of fence east-west and centerline road. There is no indication of a monument being found or set.

2011 Tim Haugen, Land Surveyor with the U.S. Fish & Wildlife Service, surveyed tracts in the S 1/2, Section 19. A monument was searched for at the intersection of an old fence line east-west and centerline old road bed north-south. No evidence was found.

Location of intersection of old fence/old road centerline corresponds with corner location as assumed by the MN Conservation Dept. in 1964. It also corresponds with the east-west position of this corner per the 1894 Supervisors Road Order. Measured distance to found monuments at section corners north and south fits closely with GLO distance, all of which supports the location of said intersection as being the West Quarter Corner of Section 19. A 7/8" O.D. iron pipe with 2" Alum. cap marked "US Fish & Wildlife Service LS 42298" was set at intersection of old fence/old road centerline, flush with ground.